

# COLORECTAL CANCER PREVENTION: GET SCREENED

## Why screen for colorectal cancer?



**90%** SURVIVAL RATE

when cancer is found and treated early<sup>2</sup>

The American Cancer Society recommends average-risk people start screening at age



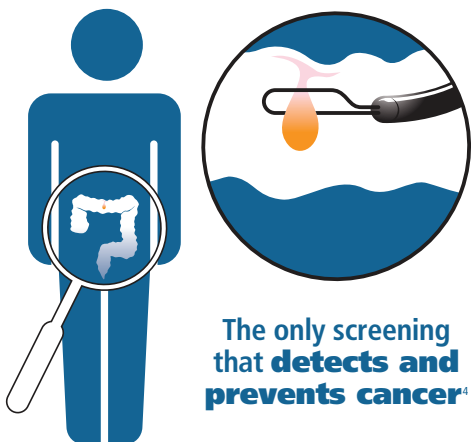
\*Not all insurers are required to cover the cost of colorectal cancer screening before age 50. Check with your insurance provider before being screened.

## What screening options are available?

<b>1</b>	<ul style="list-style-type: none"> <li>• Colonoscopy</li> <li>• Fecal immunochemical test (FIT)</li> </ul>
<b>2</b>	<ul style="list-style-type: none"> <li>• CT Colonography</li> <li>• Cologuard®</li> <li>• Flexible sigmoidoscopy</li> </ul>
<b>3</b>	<ul style="list-style-type: none"> <li>• Capsule endoscopy</li> </ul>

**The U.S. Multi-Society Task Force on Colorectal Cancer (MSTF) recommends physicians offer colonoscopy first**, annual FIT to patients who decline colonoscopy, then second-tier tests for patients who decline FIT<sup>3</sup>

## Colonoscopy: The gold standard



**The only test for those with risk factors** such as personal history of polyps or cancer, or family history of cancer<sup>4</sup>

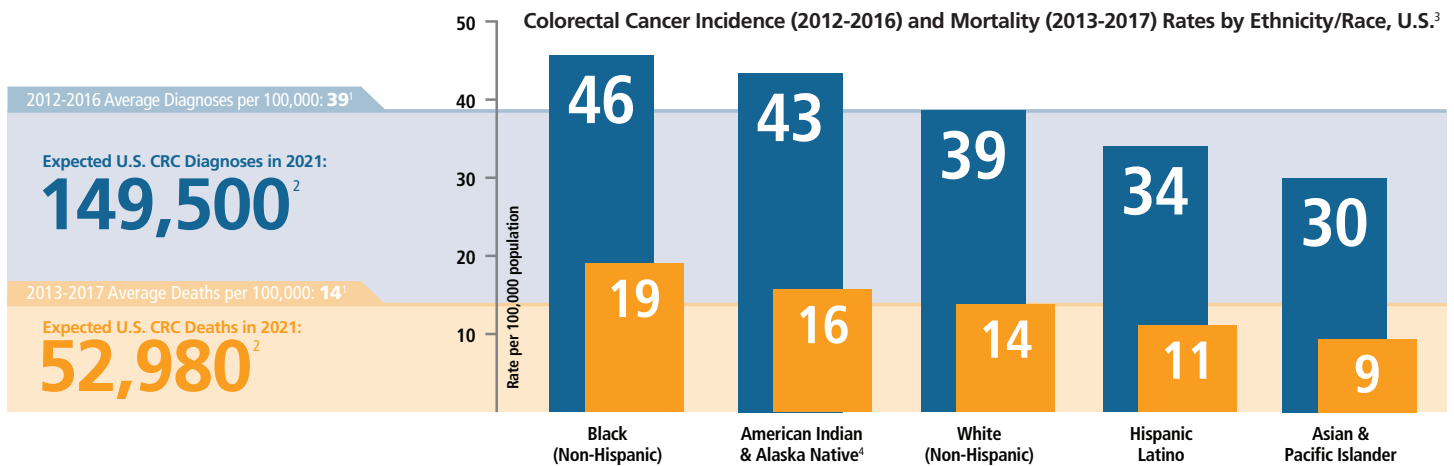


Reduces lifetime colon cancer risk by almost

**70%**<sup>5</sup>

# COLORECTAL CANCER: AM I AT RISK?

## Colorectal Cancer (CRC) Disparities in the U.S.



## Did You Know?



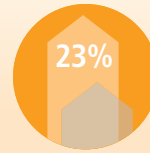
Disparities are driven by socioeconomic status and differences in access to early detection and treatment<sup>3</sup>



American Indians and Alaska Natives are the only groups for which CRC death rates are not declining<sup>3</sup>



Blacks and Hispanics are less likely to get prompt follow up after abnormal screening results and more likely to be diagnosed with late stage cancer<sup>3,4</sup>



CRC rates in Japanese men are 23% higher than in Non-Hispanic White men<sup>3</sup>

**When diagnosed at an early stage, survival rates are similar across all racial and ethnic groups<sup>3</sup>**

## What Should I Do?



Ask your primary care or GI physician about available CRC screening options<sup>5</sup>



Schedule a colonoscopy or FIT stool test at age 45<sup>6</sup>